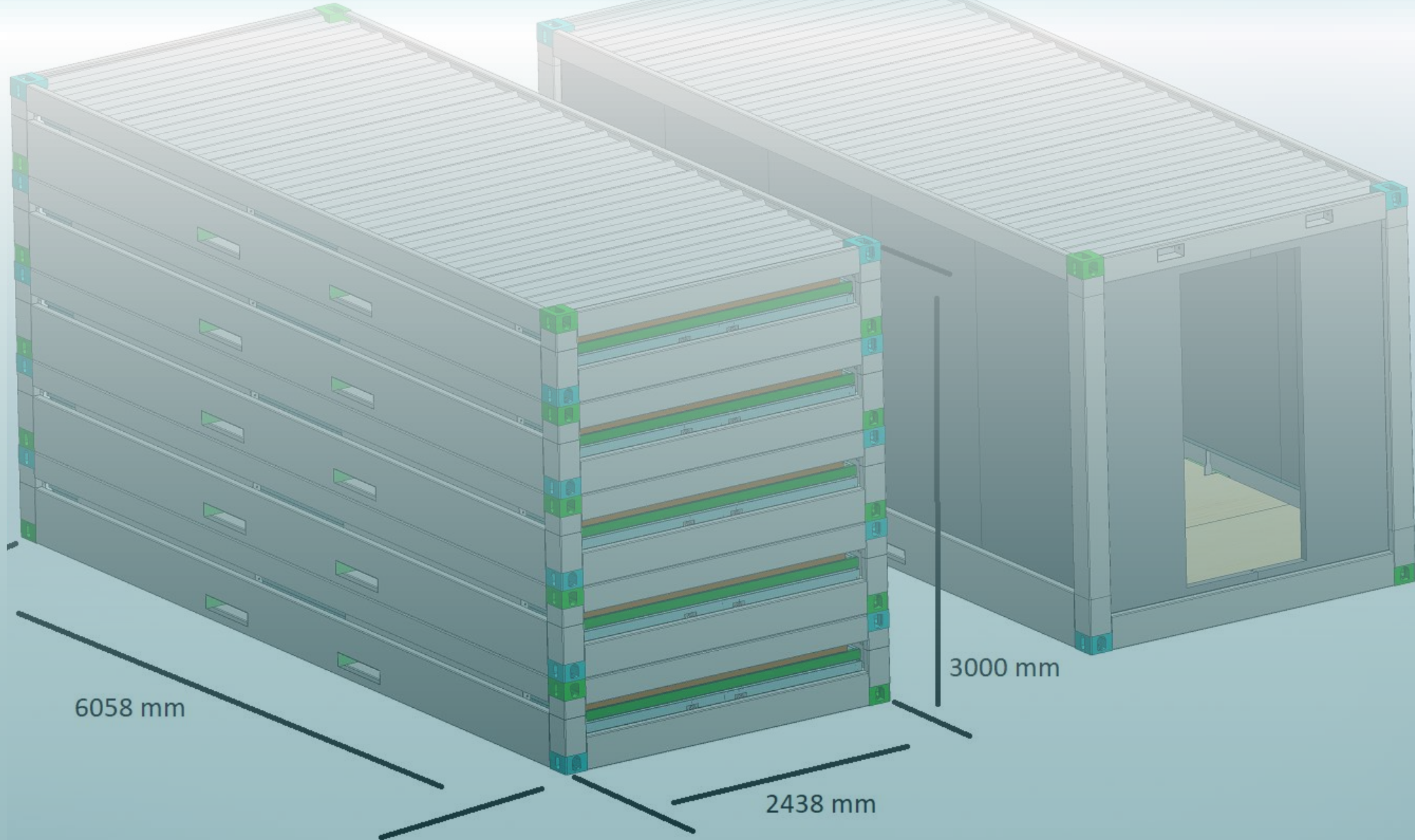


20 ft standard flatpack container



20 ft standard flatpack container

General Data

ASSEMBLED External dimensions:
Lext= 6058 mm, lext= 2438 mm, Hext=2570 mm

PACKAGE External dimensions:
Lext= 6058 mm, lext= 2438 mm, Hext=600 mm

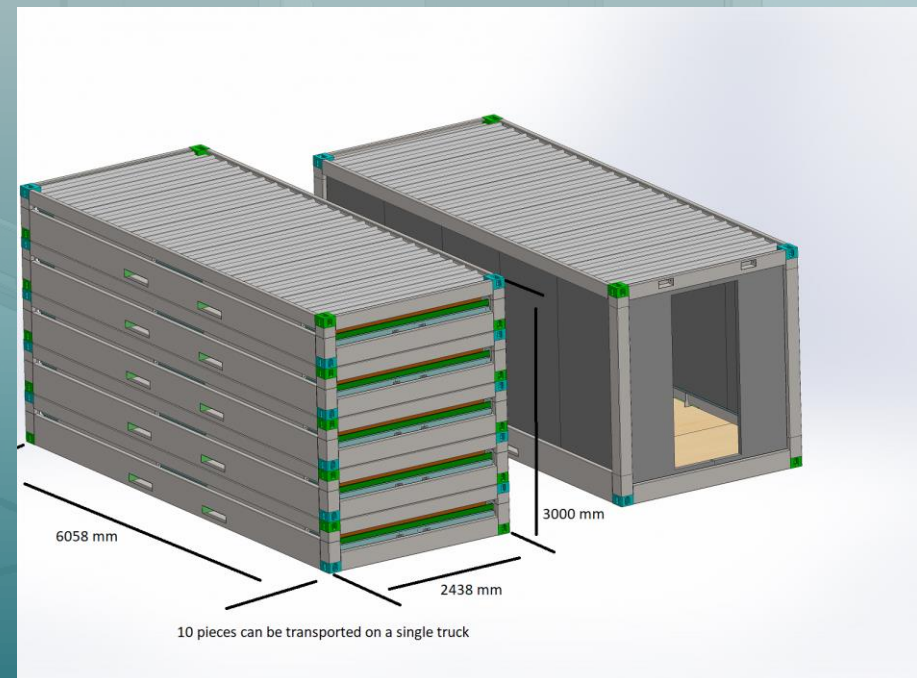
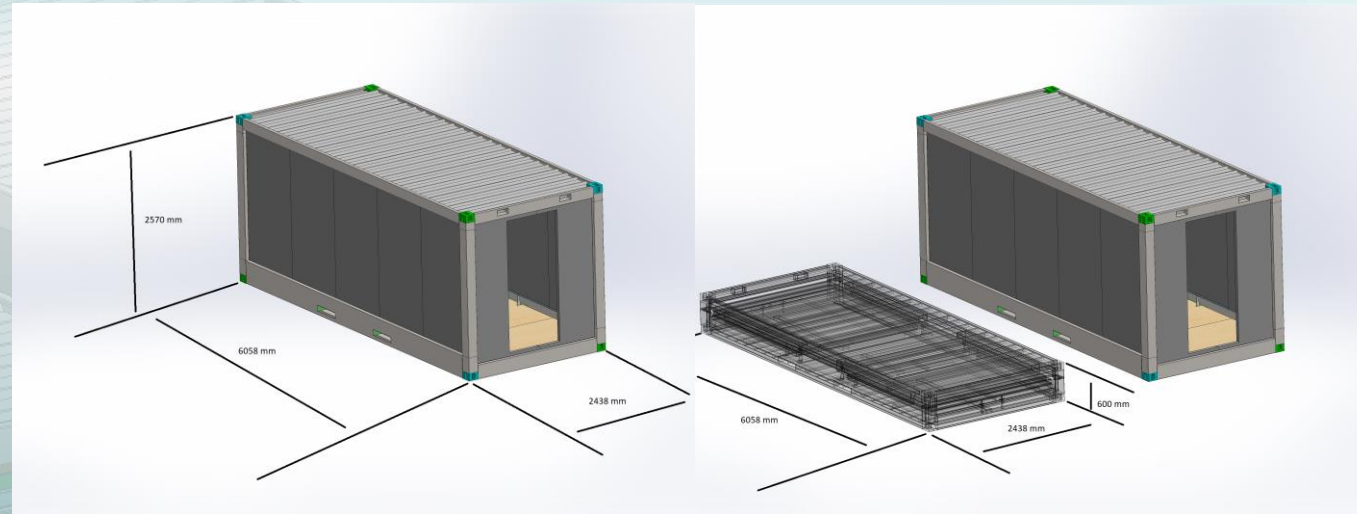
UP to 10 CONTAINERS can be transported on a single TRUCK

ISO certify CASTING CORNERS PARTS

FORKLIFT handling ready

Approximate weight 1600 kg

The structure of the container ensures overlapping mounting (P + 1), modulated, with multiple possibilities of combination.



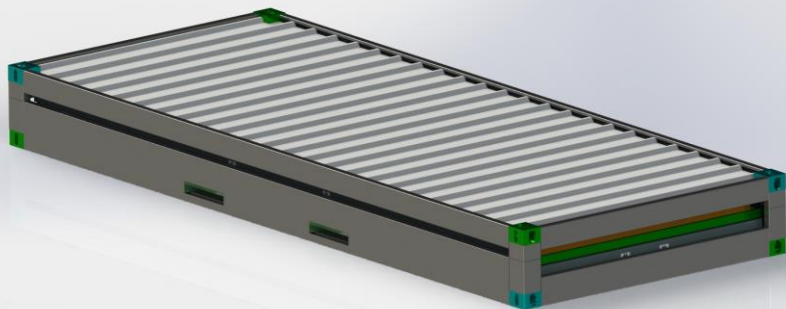
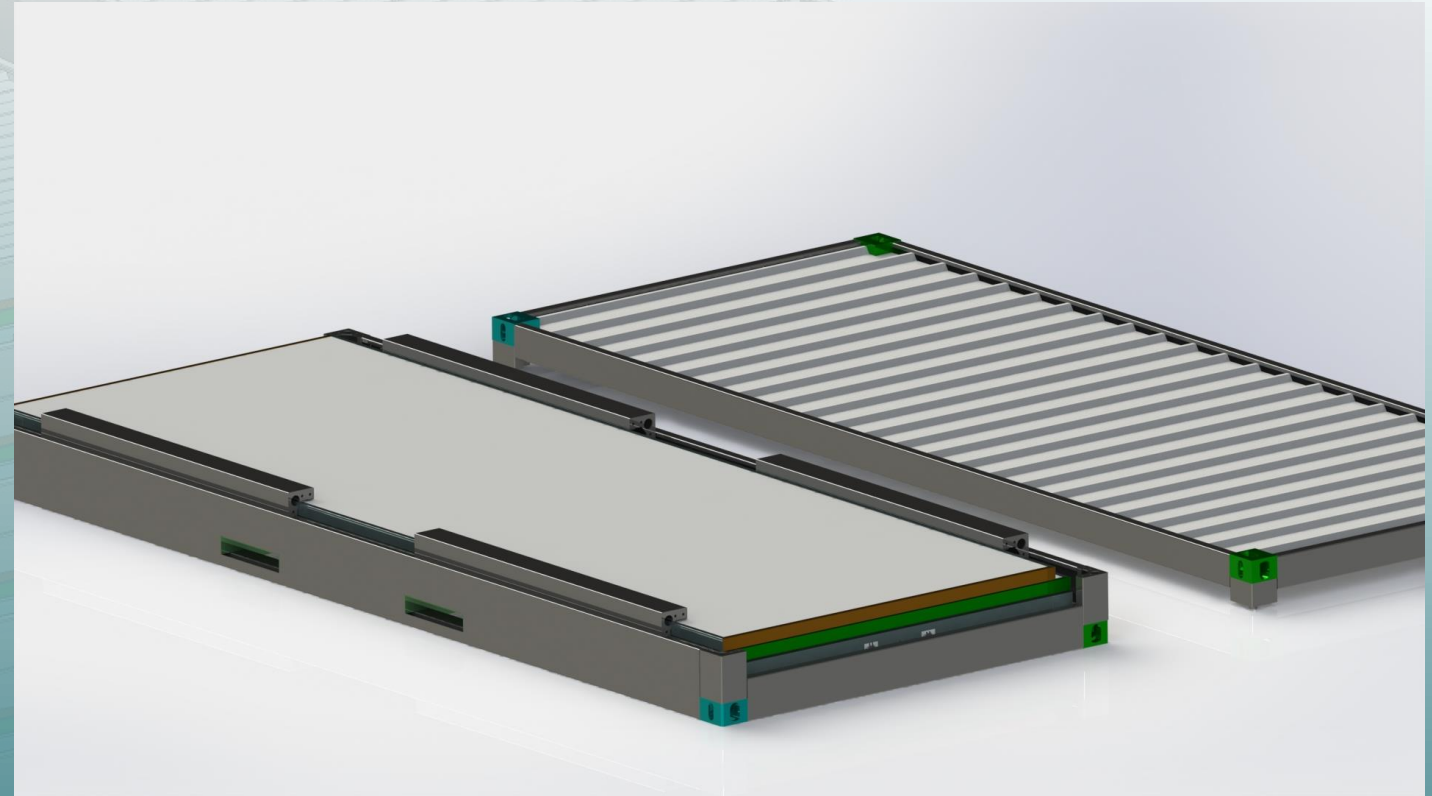
20 ft standard flatpack container

The Package General dimensions :

Lext= 6058 mm, lext= 2438 mm, Hext=600 mm

The package contains :

1. The floor
2. The ceiling
3. Four support posts with screw/nut mechanical assembly
4. 2 large side panels for 6058 mm side
5. 2 smaller side panels for 2438 mm side



3000 mm

2438 mm

20 ft standard flatpack container

1. The floor :

Made from profiled Iron sheet galvanized -3mm thickness - S350 material quality, EN 10346:2015 standard - profiles painted on the outside in an electrostatic field-powder coating

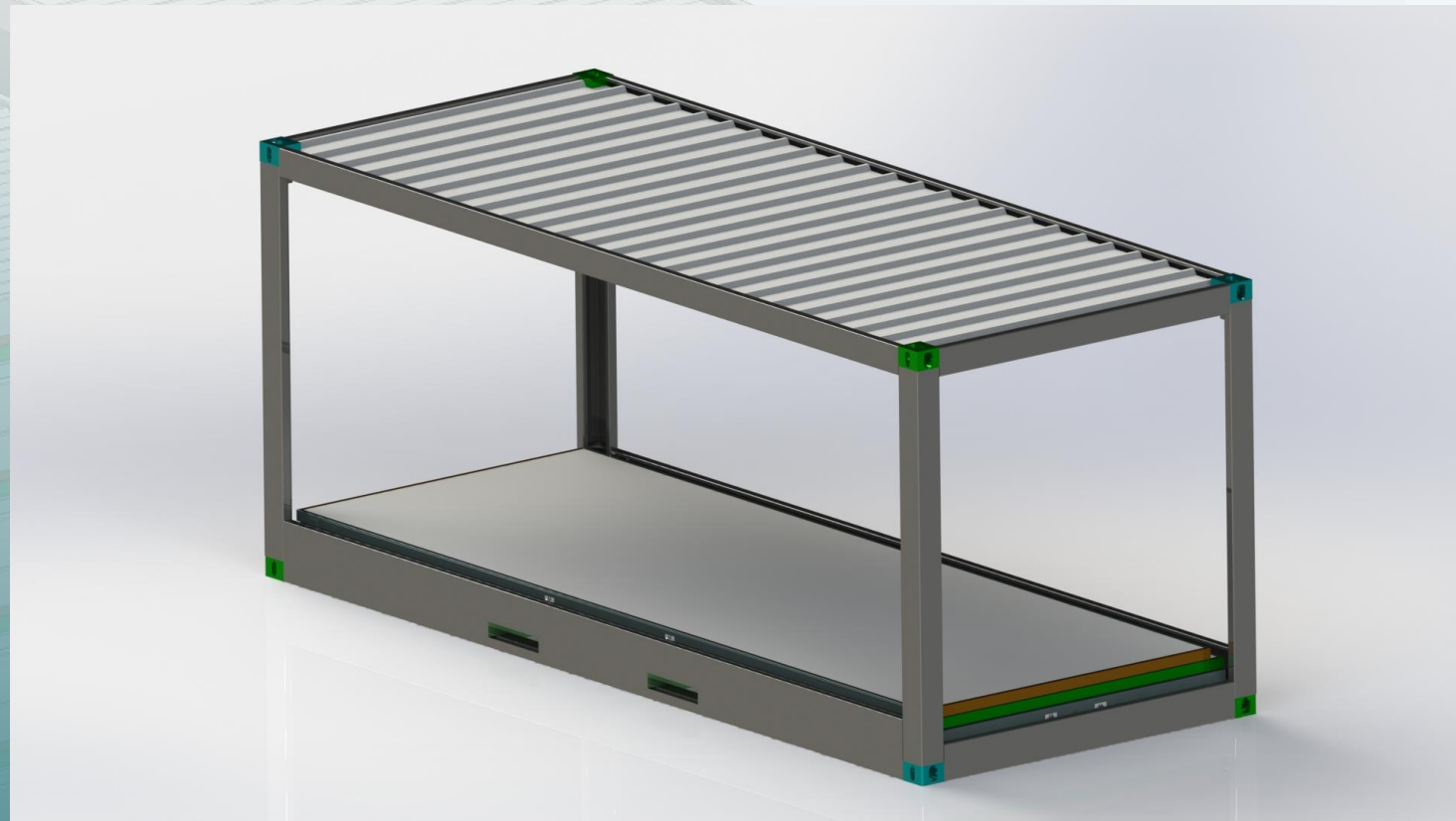
Welded integrated frame with Rockwool insulated pannels and all-welded integrated ISO CASTING certify CORNER PARTS

Fibercement Board ,PVC Flooring 2 mm

2.The ceiling :

Galvanized iron sheet metal profiles - cold profiled, 3mm thick - the profile is equipped with a water drainage channel - S350 material quality, EN 10346:2015 standard - the profiles are painted on the outside in an electrostatic field-powder coating,all-welded integrated ISO CASTING certify CORNER PARTS

60 mm thickness roof thermal insulation panels



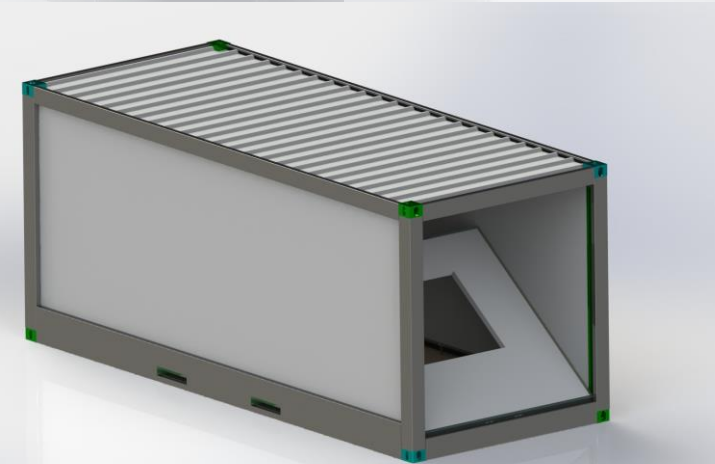
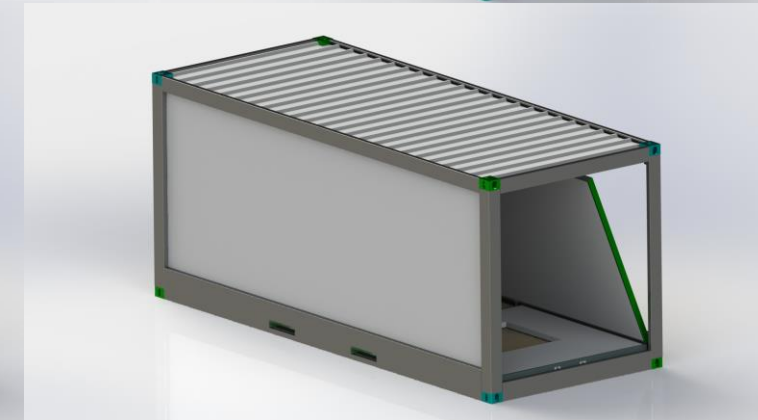
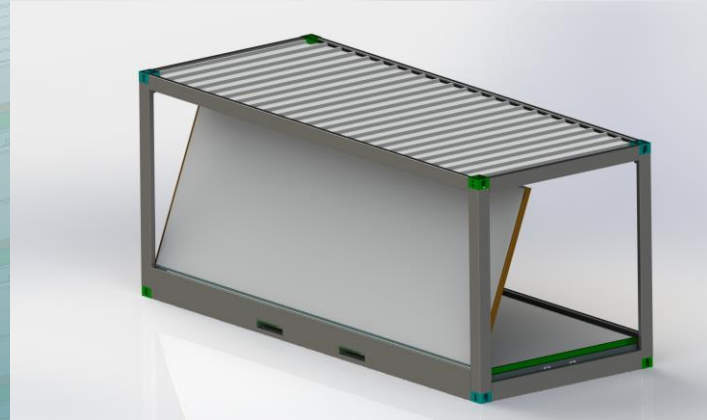
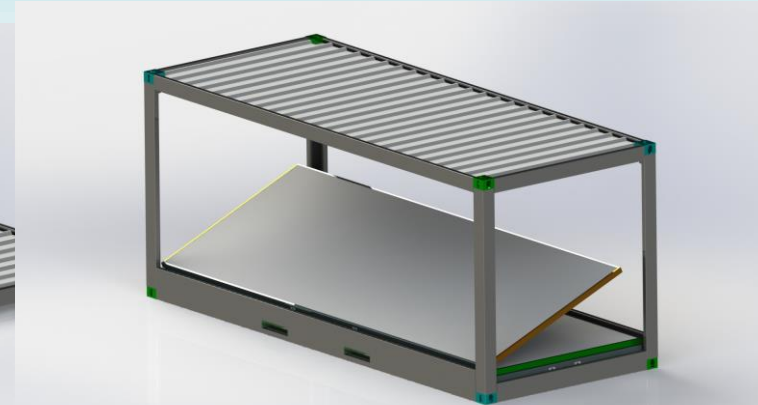
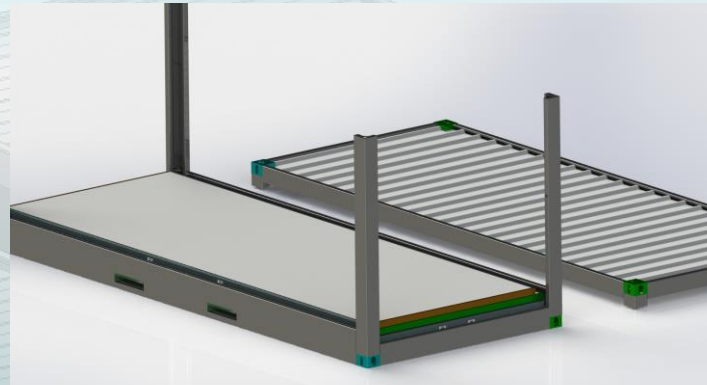
20 ft standard flatpack container

3. The Pillars

Galvanized iron sheet metal profiles - cold profiled, thickness 3mm - S350 material quality, EN 10346:2015 standard - the profiles are painted on the outside in an electrostatic field - powder coating - PVC Ø50 pipes are mounted inside the pillars that collect drain water

4. 2 Large side panels for 6058 mm side
60 mm thick Rockwool insulation panels. The wall is cylindrically articulated at the base of the floor allows a fast and efficient installation

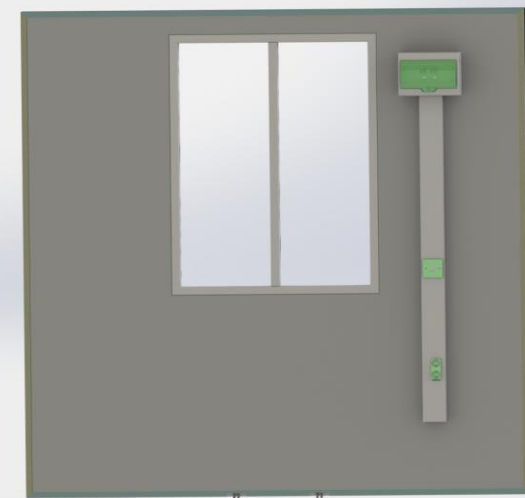
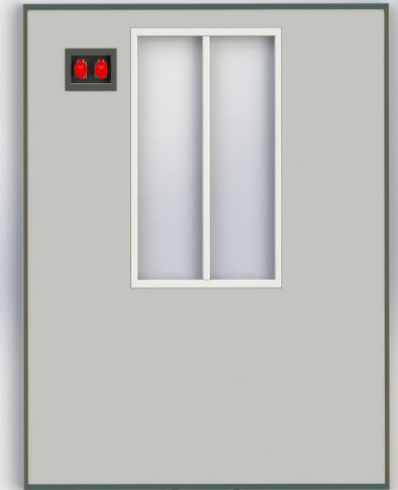
5. 2 smaller side panels for 2438 mm side
60 mm thick Rockwool insulation panels. The wall is cylindrically articulated at the base of the floor allows a fast and efficient installation. The walls have integrated doors and windows
PVC / Aluminium



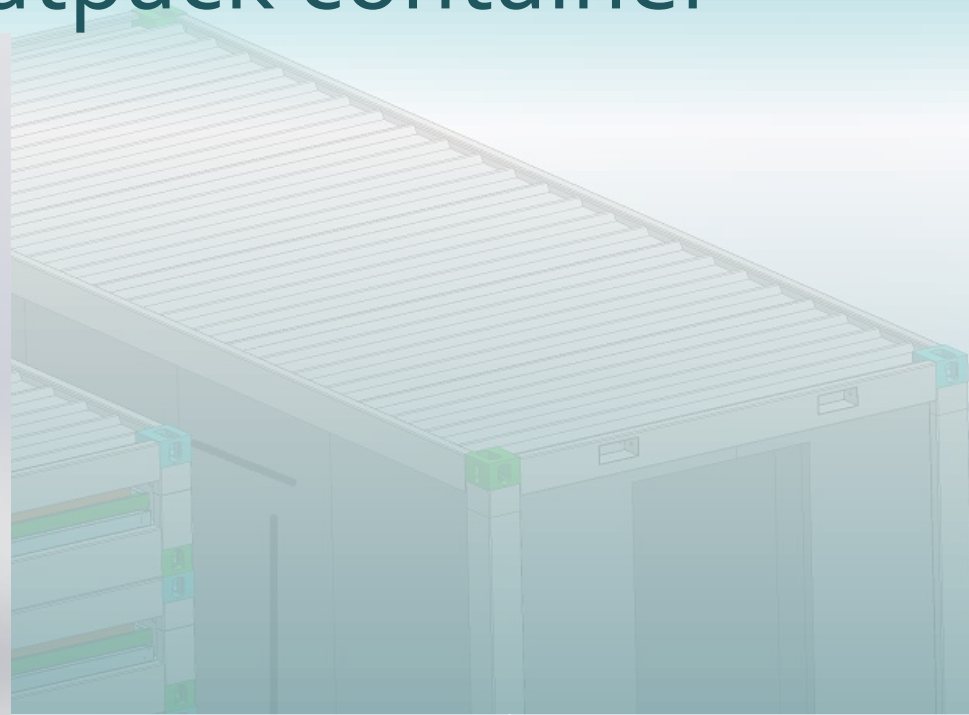
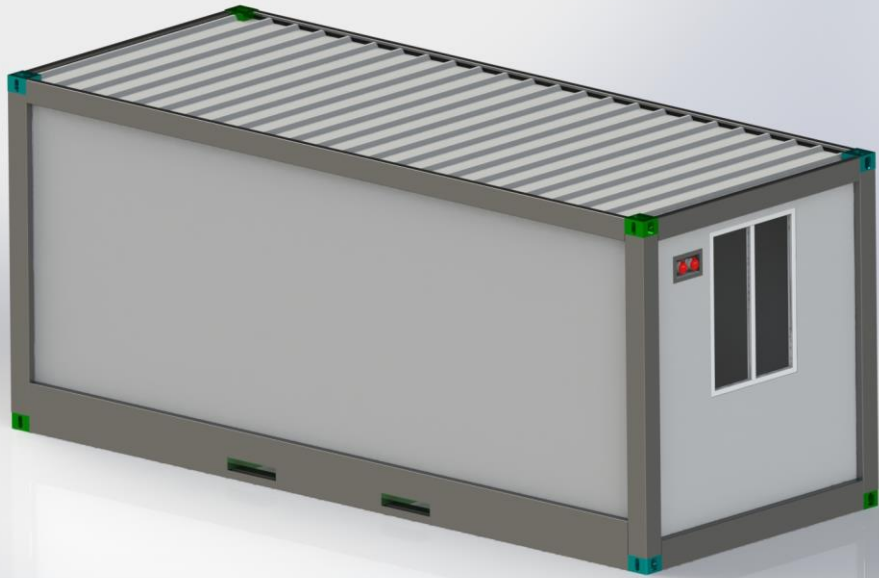
20 ft standard flatpack container

6. Electricity

Connection:	On the outside, through a junction box
Voltage:	230V
Frequency:	50 Hz
Protection:	FI switch 40 A / 0.03 A, 2 poles (230 V)
Electric panel:	apparently mounted on the wall
Lighting:	Switch, double light fixture
Sockets:	Single sockets 2 pcs



20 ft standard flatpack container



HEIGHT

2570 mm

CEILING

60 mm Rock Wool Panel

FLOORING

PVC Floor

WALL PANEL

60 mm Rock Wool Panel

EXTERNAL DOOR

Steel door

WINDOWS

PVC / Aluminium , Insect-proof Screen

FLOOR INSULATION

60 mm Rock Wool Panel

ELECTRICITY

Standard(International)

6058 mm